

# Happy Valley 2019 Annual Report



## Happy Valley Police Department

12915 SE King Rd  
Happy Valley, OR 97086

In Partnership with



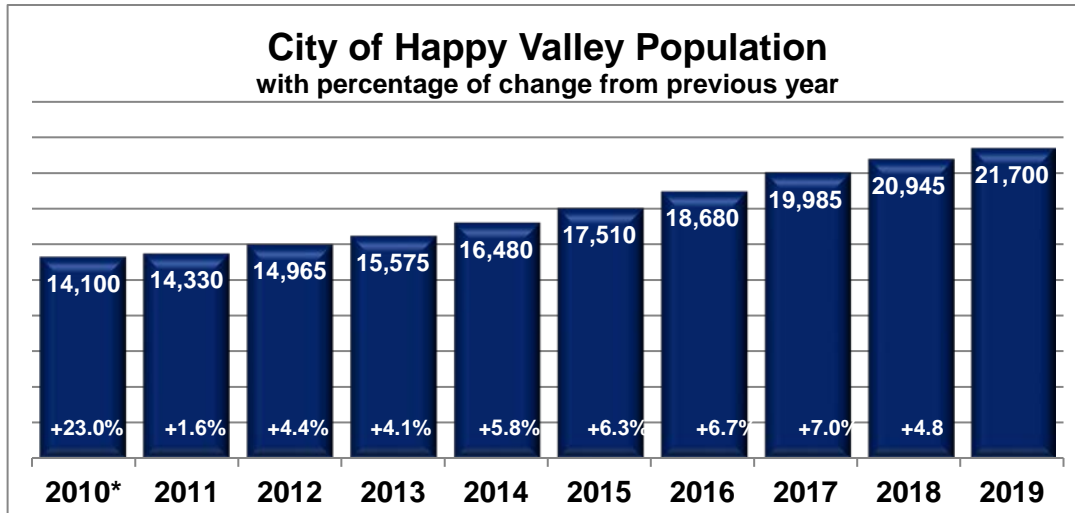
**Clackamas County  
Sheriff's Office**

## Table of Contents

Happy Valley Population - 10 Year History	3
Calls for Service - 10 Year History	3
Happy Valley PD Staffing - 10 Year History	3
Calls for Service & Reports Written by Shift	4
Monthly Calls for Service Graph	5
Other / Self-Initiated Activity	5
Types of Calls	6
All Reported Crimes	7 - 8
Crime Rate	9
Deputies per Thousand Population	9
Traffic Stops & Citations	10 - 11
Yearly Traffic Crash Graph	12
Traffic Crash Map	13

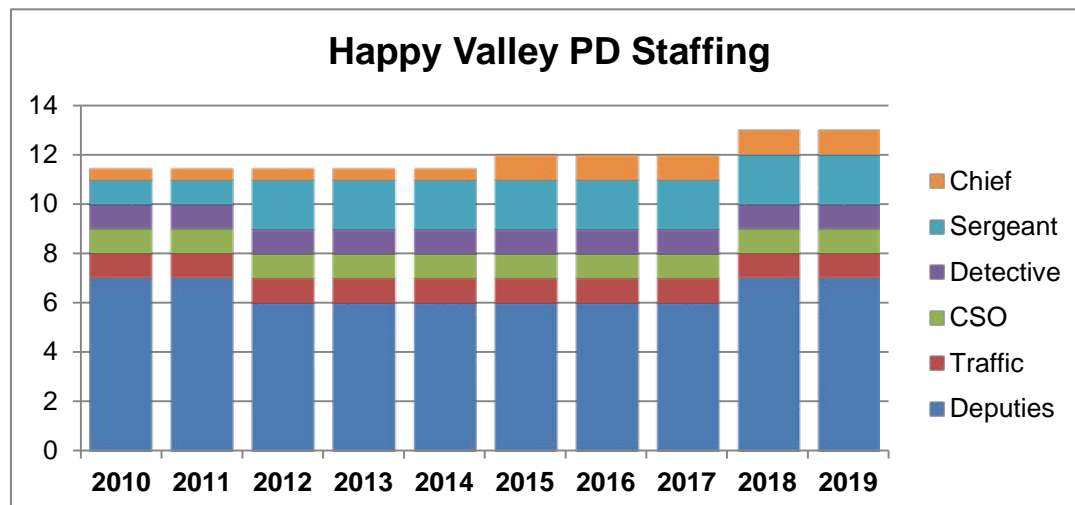
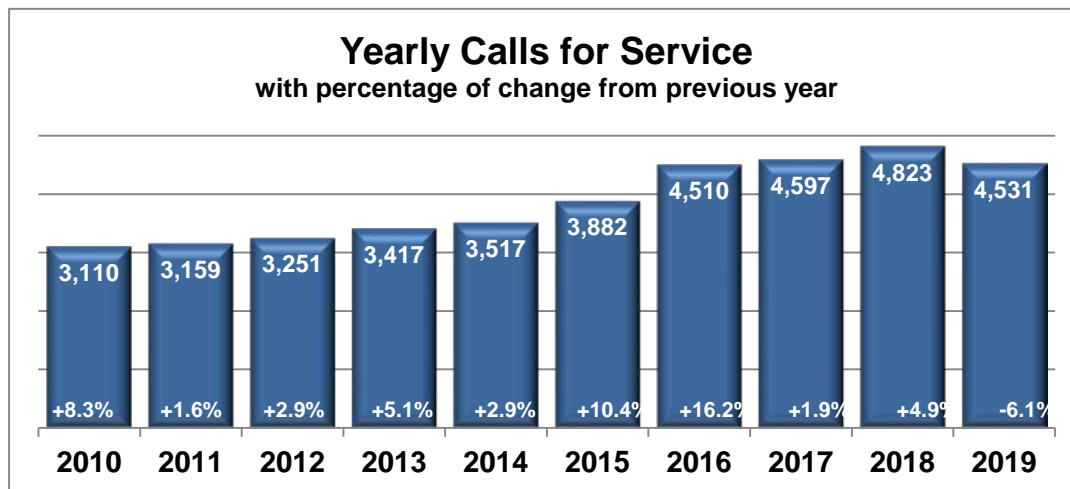
## Annual Summary

During 2019 the Clackamas County Sheriff's Office provided law enforcement service to the City of Happy Valley on a 24 hour a day basis. During this time period Deputies assigned to Happy Vall answered 4,531 calls for service, which was an average of 377.6 calls per month and 12.4 calls per day.



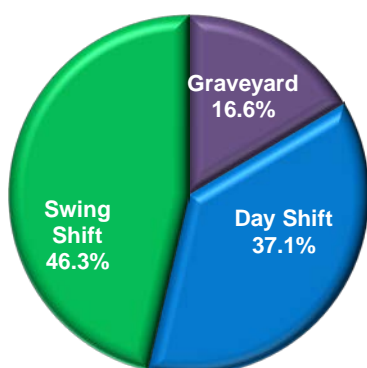
Population Source: Portland State University Population Research Center: <http://www.pdx.edu/prc/>

\*The 2010 population figures have been updated based on Portland State University's revisions after the 2010

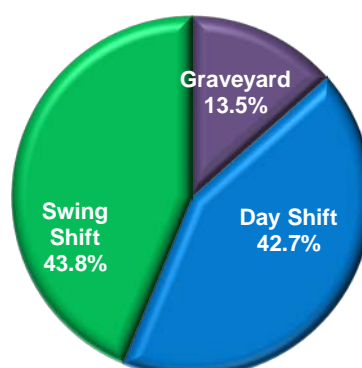


Shift	Calls for Service	Reports Written
Graveyard (2100-0700)	750	200
Day Shift (0700-1700)	1,683	633
Swing Shift (1700-0300)	2,098	648
Total:	4,531	1,481

**2019 Calls Taken**



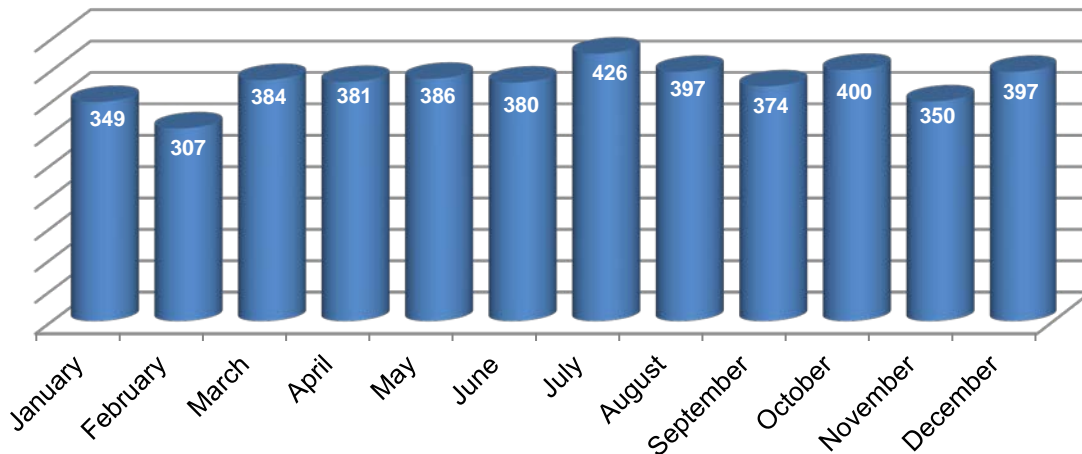
**2019 Reports Written**



**Yearly Averages**

Number of Calls Per Shift	2019	Previous 5 Year Average	Previous 10 Year Average
Graveyard	750	722.2	633.1
Day Shift	1,683	2,105.8	1,839.9
Swing Shift	2,098	1,437.8	1,240.7
Total Calls:	4,531	4,265.8	3,713.7

## 2019 Calls for Service by Month



## Other / Self-Initiated Officer Activity

Sorted by frequency of calls based on most current year

Number of Calls Per Shift	2019	2018	5 Year Average	10 Year Average
Traffic Stop	3,473	4,313	4,190.6	3,874.0
Follow-Up Contact	597	650	615.8	557.4
Premise Check	449	228	363.2	602.0
Suspicious Veh Stop	391	535	497.2	428.7
Detail	137	316	454.0	346.0
Subject Stop	112	163	250.2	210.9
Community Contact	49			
Warrant Service	44	50	41.2	53.5
Suspect Contact	27	29	21.8	30.4
Traffic Detail	4			
Court*		40	90.6	92.0
Foot Patrol*		6	38.4	31.3
Meeting*		13	82.6	60.7
Training*		41	133.8	119.9
<b>Total Calls:</b>	<b>5,283</b>	<b>6,384</b>	<b>6,779.4</b>	<b>6,406.8</b>

\* CCOM switched to a new dispatch CAD system on 03/13/18. The new system does not capture these call types.

This chart shows the types of calls for service during the year. These calls do not reflect actual criminal activity. In some cases the call was dispatched as a particular type of incident, but it was later determined to be of a different nature. For actual criminal activity during the year, see the "All Reported Crimes" chart.

## Types of Calls

Sorted by the frequency of calls based on the most current year

Call	2019	2018	Previous 5 Yr Avg	Previous 10 Yr Avg	2019 Change from 10 Yr Avg	
<b>Susp Circumstance / Person</b>	<b>700</b>	729	629.0	543.3	156.7	28.8%
<b>Alarm</b>	<b>561</b>	494	440.6	403.6	157.4	39.0%
<b>Traffic Crash</b>	<b>350</b>	324	293.0	230.1	119.9	52.1%
<b>Theft</b>	<b>325</b>	458	322.6	244.0	81.0	33.2%
<b>Parking Complaint</b>	<b>165</b>	233	273.0	253.8	-88.8	-35.0%
<b>Domestic Disturbance</b>	<b>155</b>	146	133.2	107.1	47.9	44.7%
<b>Threat / Harassment</b>	<b>155</b>	137	101.4	94.0	61.0	64.9%
<b>Traffic Complaint</b>	<b>148</b>	228	194.8	174.1	-26.1	-15.0%
<b>Unwanted / Trespass</b>	<b>122</b>	131	77.6	58.9	63.1	107.1%
<b>Fraud</b>	<b>112</b>	129	124.0	94.5	17.5	18.5%
<b>Juvenile Problem</b>	<b>93</b>	107	101.4	86.7	6.3	7.3%
<b>Criminal Mischief</b>	<b>82</b>	99	91.0	96.8	-14.8	-15.3%
<b>Burglary</b>	<b>69</b>	80	70.8	67.2	1.8	2.7%
<b>Animal Complaint</b>	<b>66</b>	83	84.6	75.9	-9.9	-13.0%
<b>Suicide Attempt / Threat</b>	<b>61</b>	61	52.0	40.2	20.8	51.7%
<b>Disturbance</b>	<b>48</b>	44	37.2	29.2	18.8	64.4%
<b>Stolen Vehicle</b>	<b>46</b>	70	34.6	26.5	19.5	73.6%
<b>Behavioral Health Incident</b>	<b>36</b>	26	19.2	14.5	21.5	148.3%
<b>Assault</b>	<b>31</b>	23	24.6	19.2	11.8	61.5%
<b>Vice Complaint</b>	<b>30</b>	17	20.0	21.6	8.4	38.9%
<b>Runaway</b>	<b>23</b>	31	28.2	27.0	-4.0	-14.8%
<b>Missing Person</b>	<b>22</b>	19	13.2	12.1	9.9	81.8%
<b>Recovered Stolen Vehicle</b>	<b>17</b>	26	18.8	16.1	0.9	5.6%
<b>Death Investigation</b>	<b>15</b>	9	10.8	10.8	4.2	38.9%
<b>Viol. Restraining Order</b>	<b>15</b>	11	11.6	11.0	4.0	36.4%
<b>Sex Crimes</b>	<b>14</b>	14	13.4	11.8	2.2	18.6%
<b>Robbery</b>	<b>2</b>	3	1.2	2.5	-0.5	-20.0%
<b>Shooting</b>	<b>0</b>	0	1.0	0.6	-0.6	-100.0%
<b>Other</b>	<b>1,068</b>	1,091	1,043.0	940.6	127.4	13.5%
<b>Total Calls:</b>	<b>4,531</b>	4,823	4,265.8	3,713.7	817.3	22.0%

## All Reported Crimes

Part I Crimes		2019	2018
	Type		
Theft (all)	Prop	246	339
Burglary	Prop	60	67
Stolen Vehicles	Prop	51	56
Robbery	Prop	6	4
Assault, Aggravated	Pers	3	3
Rape	Pers	2	3
Attempt Murder	Pers	2	1
Arson	Prop		1
Murder	Pers		1
<b>Part I Totals:</b>		<b>370</b>	<b>475</b>

Part II / Other Crimes		2019	2018
	Type		
Criminal Mischief	Prop	85	75
D.U.I.I.	Behav	66	75
Drug Charges (all)	Behav	47	88
Identity Theft	Prop	43	33
Unlawful Entry Into Motor Vehicle	Prop	37	63
Harassment	Pers	29	13
Assault, Simple	Pers	18	20
Disorderly Conduct	Behav	15	6
Forgery / Counterfeiting	Prop	13	12
Resisting Arrest	Behav	12	2
Criminal Trespass	Behav	11	18
Fraudulent Use of Credit Card	Prop	9	6
Violation of Restraining Order	Behav	9	7
Weapons Violations	Behav	9	12
M.I.P. - Alcohol	Behav	8	4
Recklessly Endangering	Pers	6	2
Runaway Juveniles	Behav	6	17
Child Abuse / Neglect	Pers	3	1
Menacing	Pers	3	5
Strangulation	Pers	3	5
Cruelty to Animals	Behav	2	
Offensive Littering	Behav	2	3
Sex Crimes (other)	Pers	2	
Sexual Abuse	Pers	2	3
Sodomy	Pers	1	
Stalking	Pers		2
Kidnapping	Pers		1
Fraud (Other)	Prop		
Manslaughter/Neg. Homicide	Pers		
Criminal Mistreatment	Pers		
Custodial Interference	Behav		
Prostitution	Behav		
Public / Private Indecency	Behav		
Other Crimes Not Listed	Behav	60	65
<b>Part II Totals:</b>		<b>501</b>	<b>538</b>

### All Reported Crimes Continued

	2019	2018
<b>Total Crimes Reported</b>	<b>871</b>	<b>1,013</b>

<b>Crime Types</b>	<b>2019</b>	<b>2018</b>
<b>Property Crimes</b>	550	656
<b>Behavioral Crimes</b>	247	297
<b>Person Crimes</b>	74	60

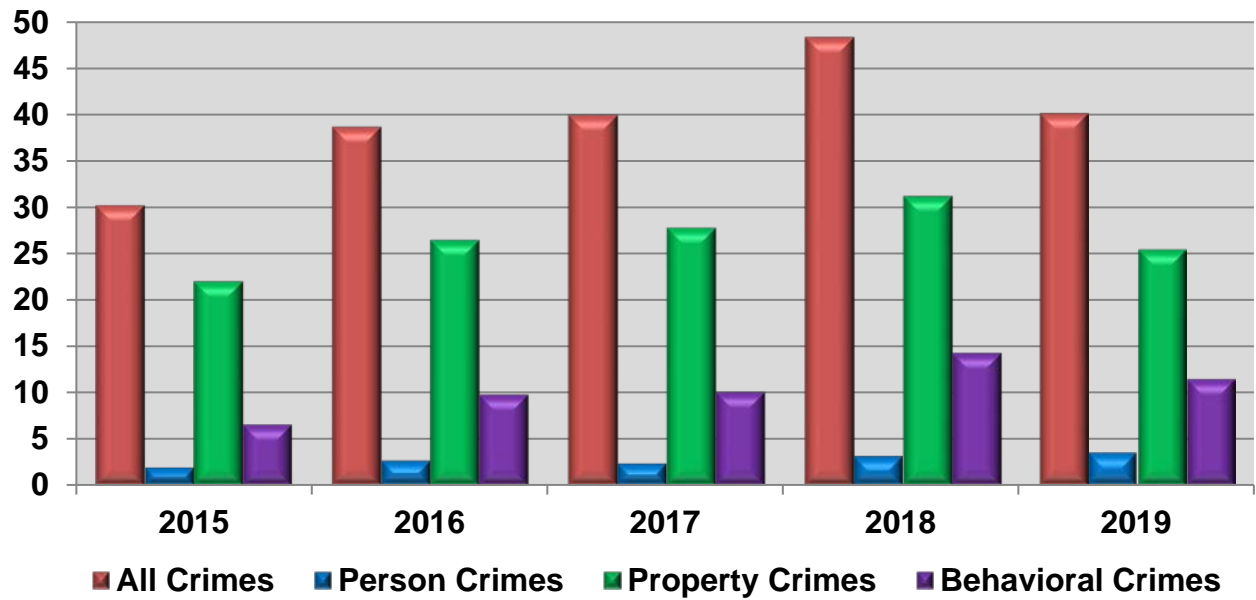


## Crime Rates Per 1,000 Population

Crime Type	2015	2016	2017	2018	2019
<b>All Crimes</b>	<b>30.3</b>	<b>38.7</b>	<b>40.0</b>	<b>48.4</b>	<b>40.1</b>
Person Crimes	1.8	2.6	2.3	3.1	3.4
Property Crimes	21.9	26.4	27.7	31.1	25.3
Behavioral Crimes	6.5	9.7	10.0	14.2	11.4

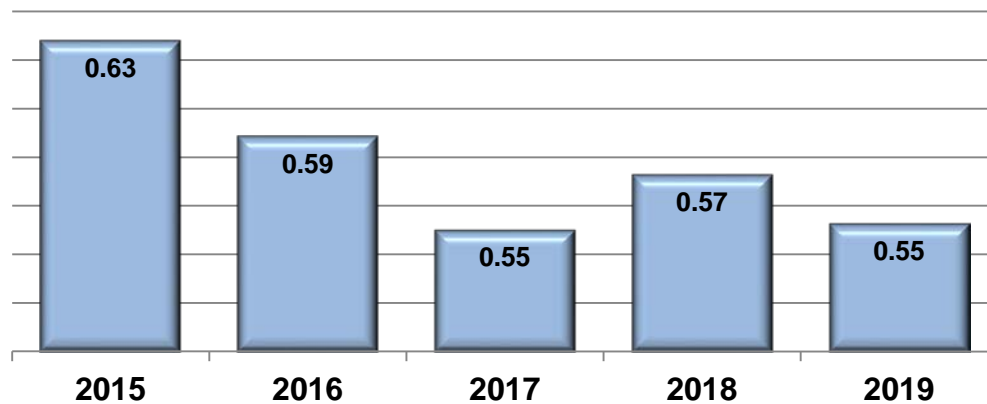
### Crime Rates Per 1,000 Population

2015 - 2019



### Deputies per 1,000 Population

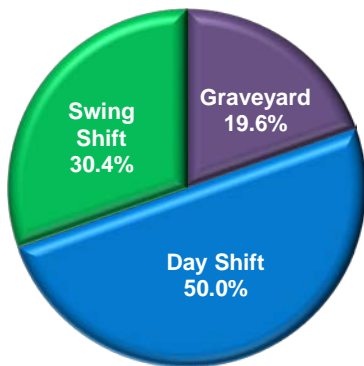
Includes all sworn members of Happy Valley PD



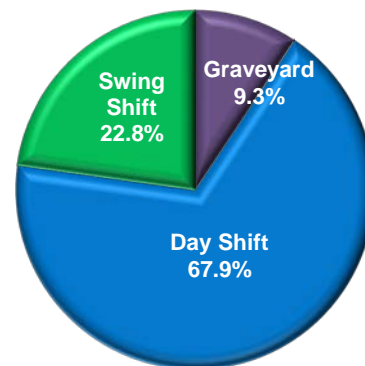
## Traffic

Shift	Traffic Stops	Citations Issued
Graveyard	681	289
Day Shift	1,737	2,100
Swing Shift	1,055	705
<b>Total:</b>	<b>3,473</b>	<b>3,094</b>

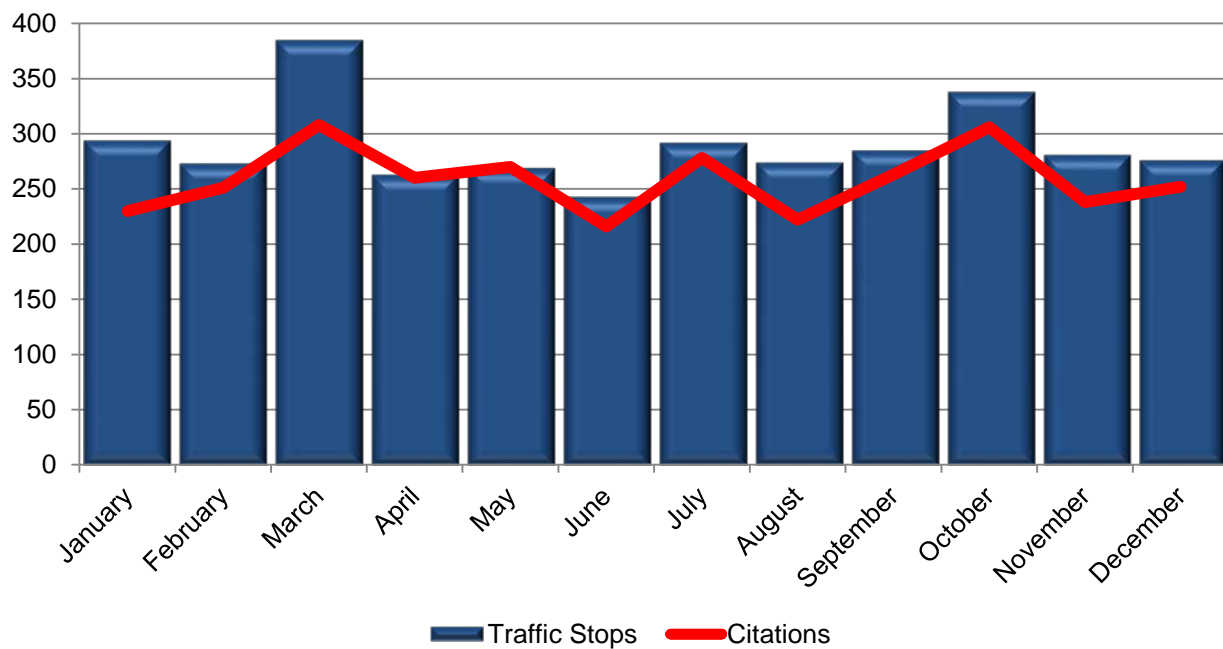
**2019 Traffic Stops**



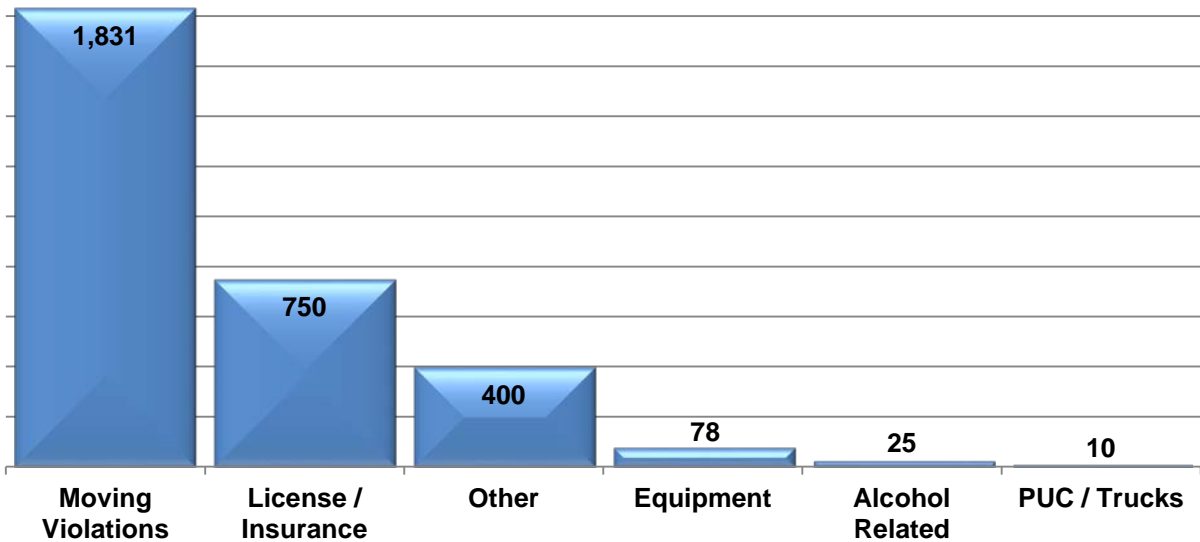
**2019 Citations Issued**



**2019 Traffic Stops and Citations by Month**



### Types of Traffic Citations Issued in 2019



### Traffic Stops

Shift	2019	2018	5 Year Average	10 Year Average
Graveyard	681	895	1,159.4	887.1
Day Shift	1,737	2,045	1,761.8	1,754.0
Swing Shift	1,055	1,370	1,184.2	1,195.2
<b>Total Stops:</b>	<b>3,473</b>	<b>4,310</b>	<b>4,105.4</b>	<b>3,836.3</b>

### Traffic Citations Issued

Shift	2019	2018	5 Year Average	10 Year Average
Graveyard	289	626	597.0	418.7
Day Shift	2,100	2,067	1,442.2	1,363.8
Swing Shift	705	917	549.2	507.8
<b>Total Citations:</b>	<b>3,094</b>	<b>3,610</b>	<b>2,588.4</b>	<b>2,290.3</b>

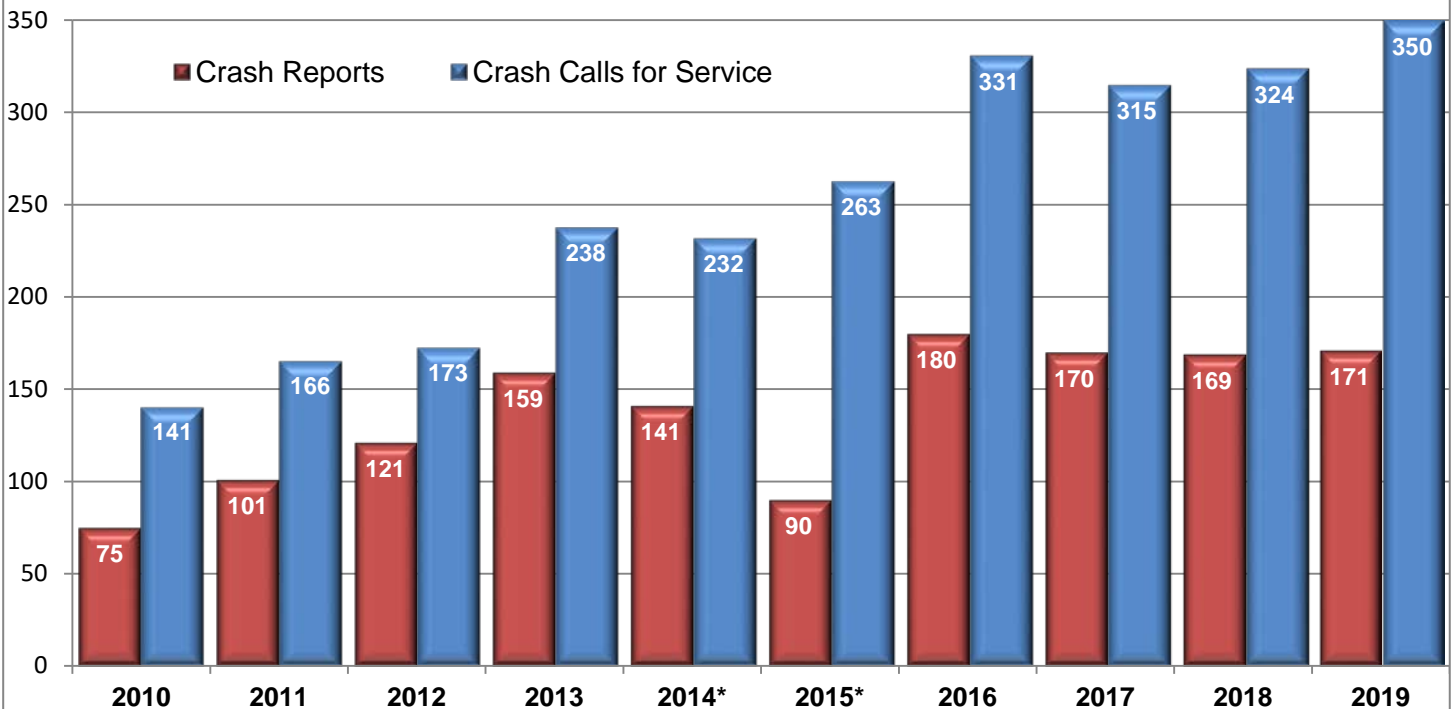
## Traffic Crashes

### Top 10 Intersections for Traffic Crashes

Based on calls for service

Intersection	Crashes
SE Sunnyside Rd/SE 122nd Ave	19
SE Hwy 212/SE 135th Ave	18
SE Sunnyside Rd/SE 169th Ave	13
SE Hwy 212/SE Hwy 224	11
SE 172nd Ave/SE Sunnyside Rd	10
SE Sunnyside Rd/SE 119th Ave	9
SE Hwy 212/SE 142nd Ave	9
SE Sunnyside Rd/SE 142nd Ave	9
SE 152nd Ave/SE Sunnyside Rd	8
SE Sunnyside Rd/SE 132nd Ave	7

### Traffic Crashes in Happy Valley by Year



\*Due to a change in the Records Management System, there may be missing data for traffic crash reports in 2014 & 2015

